



Estelle Road NW3

Parkheath  
*Sold on Service*





## Estelle Road, NW3

### Asking Price £1,550,000

### Freehold

- A character filled maisonette spanning 3 floors, 4 double bedrooms, 2 bathrooms and separate w/c
- Entrance on ground floor plus entire 1st, 2nd and 3rd floors
- Sole use of stunning 22ft tiled terrace with glass feature
- A generous 1660 sq ft approx with a wealth of period features
- Ornate ceiling moulding, wood flooring, feature fireplaces, centre rose and bay windows
- Wonderful 18ft kitchen/diner with access to 7ft balcony and 18ft reception with curved bay
- 14ft main bedroom plus 3 further doubles plus, Indulgent 13ft bathroom plus modern wet room
- Scenic views, plenty of storage in this quiet residential road
- Ownership of freehold to the building
- A short stroll to Hampstead Heath and Gospel Oak and Hampstead Heath stations, Belsize Park and Hampstead are close by



Belsize Park/Hampstead  
208 Haverstock Hill  
NW3 2AG  
Sales 020 7431 1234  
Lettings 020 7431 3104  
[nw3@parkheath.com](mailto:nw3@parkheath.com)

South/West Hampstead  
192 West End Lane  
NW6 1SG  
Sales & Lettings  
Tel 020 7794 7111  
[192@parkheath.com](mailto:192@parkheath.com)

Kensal Rise  
54-56 Chamberlayne Rd  
NW10 3JH  
Tel 020 8960 4845  
[kensal@parkheath.com](mailto:kensal@parkheath.com)

Property Management  
192 West End Lane  
NW6 1SG  
020 7433 6174  
[pm@parkheath.com](mailto:pm@parkheath.com)

**Parkheath**  
*Sold on Service*

**Camden Tax band F**

[www.parkheath.com](http://www.parkheath.com)

Estelle Road, London, NW3

Approximate Gross Internal Floor Area = 154.2 sq m / 1660 sq ft (Excluding Restricted Height Area)

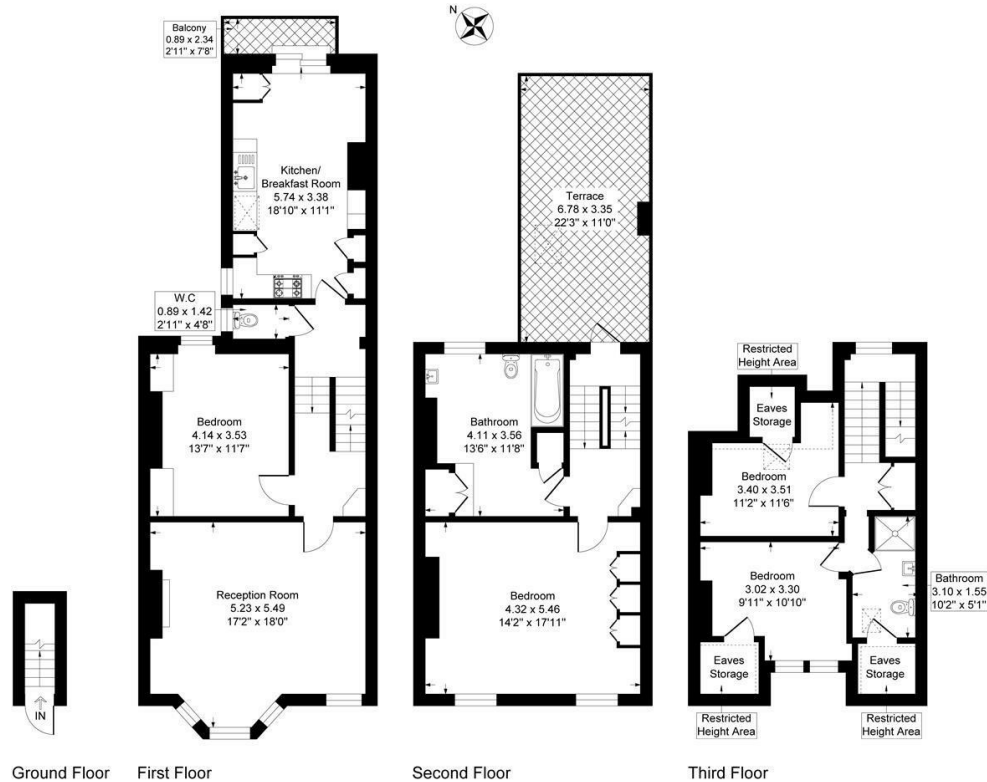
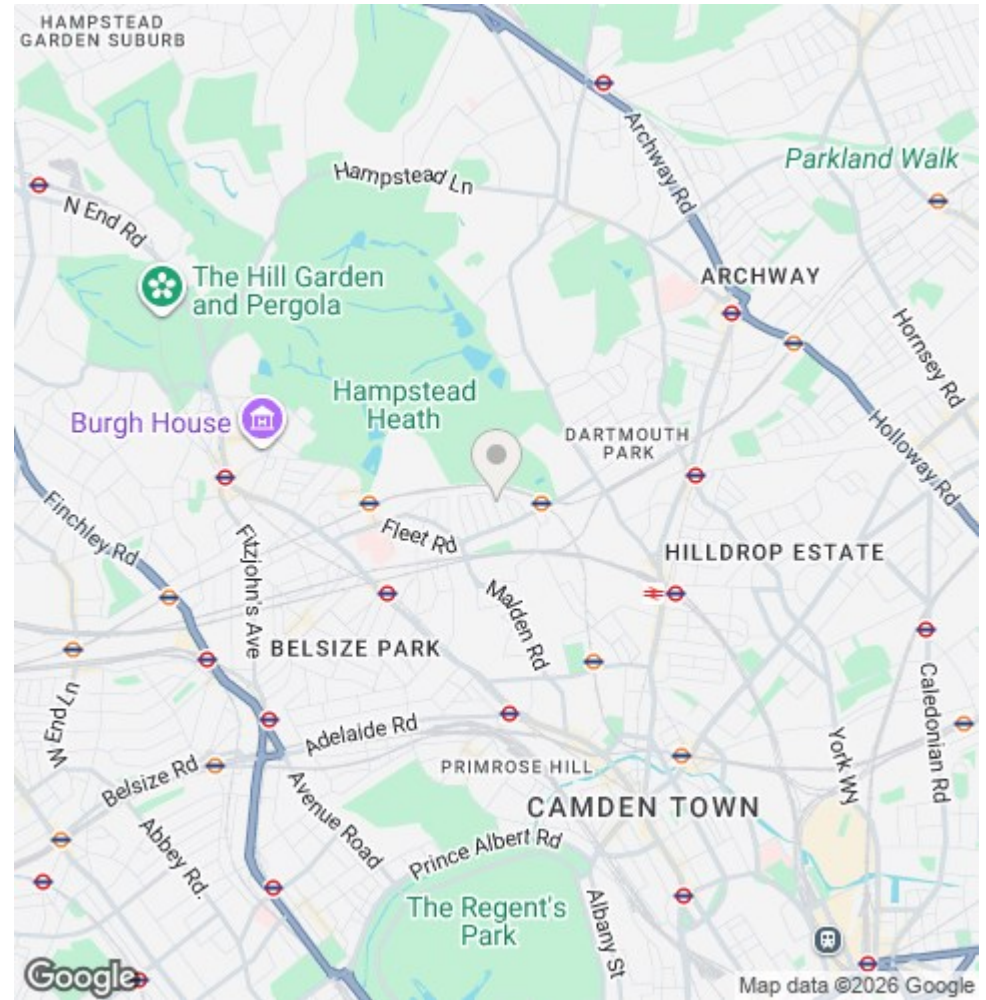


Illustration for identification purposes only, measurements are approximate, not to scale.



The particulars do not constitute part of an offer or contract. The particulars, including text, photographs and plans, are for the guidance only of prospective purchasers/tenants and must not be relied upon as statements of fact. The descriptions provided therein represent the opinion of the author and whilst given in good faith should not be construed as statements of fact. Nothing in these particulars shall be deemed a statement that the property is in good condition or otherwise or that any services or facilities are in good working order. All measurements are approximate